



WELCOME TO
BUTE MILLS

CREATIVE MEETING SPACES IN CENTRAL LUTON

Youthscope



RULE DOWN

Over one hundred years ago, Bute Mills was a working flour mill helping to feed families across Bedfordshire - now it's converted into an award winning space for the national charity Youthscape, opened by Their Royal Highnesses The Duke and Duchess of Cambridge in August 2016.

The £3.2 million project has transformed this five-storey building retaining the beautiful original features and adding the latest technology and facilities for Youthscape's work with young people.

Alongside its day-to-day work, Youthscape makes parts of it's lovely building available to external hirers.

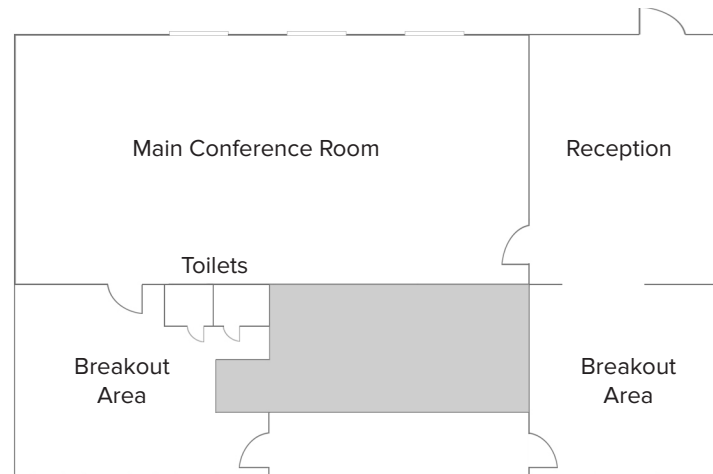




The Conference Floor

Our biggest and most flexible space - **three rooms** on the ground floor adjacent to the main entrance and reception.

The largest is the **main conference** room, which seats 80 and is suitable for receptions, exhibitions, conferences and training days. There's a full sound system and large screen projector. There are **two adjoining rooms** for breaks or extra sessions included. Three high-def cameras fitted in the main conference room give you the option of recording or live-streaming your event.



Capacity in the main room, not including breakout rooms:

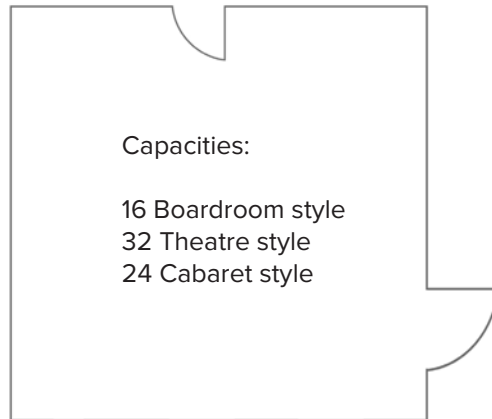
100 reception
80 theatre





The Art Room

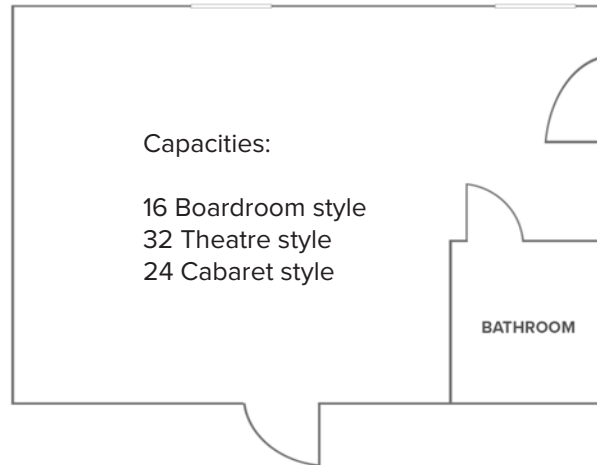
A lovely large room that is perfect for training, presentations and meetings. Like the other rooms on this floor, you can make use of the shared kitchen and lounge areas.



The Drama Room

Adjacent to The Art room, this is a spacious room that is perfect for training, presentations and meetings.

The Drama room also has access to a disabled toilet and you are free to make use of the shared kitchen and lounge areas.

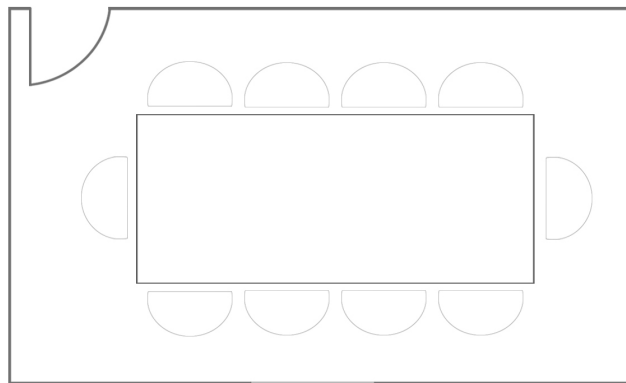






The Den

Our larger meeting room with a stunning glass wall and beautiful red-brick interior. There's plenty of space for 10 around the table. Feel free to make use of our shared kitchen space and enjoy a cup of tea or coffee.



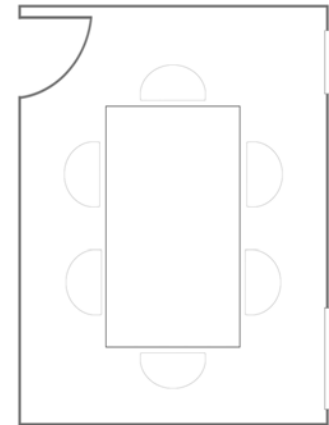
Capacity: 10 Boardroom style





The Bunker

Our medium sized meeting room also with a stunning glass wall. There's room for 6 around the table and you are free to help yourself to drinks in our kitchen area.

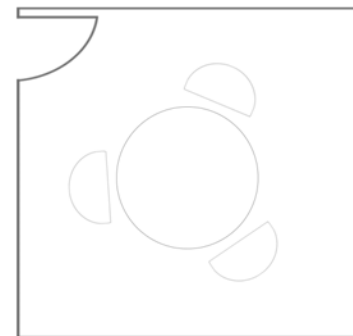


Capacity: 6 Boardroom style



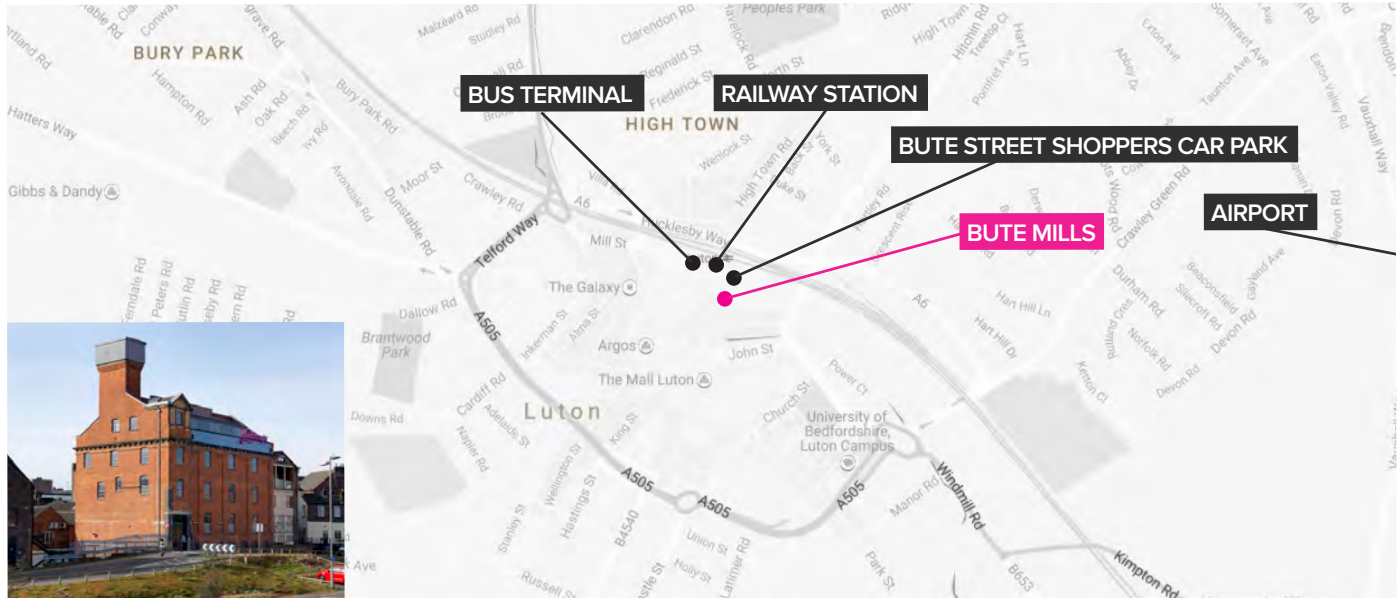
The Snug

Our cosiest room and the perfect place for 3 to meet together. The glass wall looks through onto the shared kitchen space where you can help yourself to drinks.



Capacities: 3 Boardroom style

TRAVEL INFORMATION TO BUTE MILLS



BY TRAIN

Luton railway station is just 50 metres from Bute Mills. Exit the station towards the town centre, passing Starbucks to your right, and you will see the Mill across to your left. The main entrance is at the front of the building. Note the correct station is **Luton** NOT Luton Parkway.

BY COACH / BUS

Luton bus terminal is also 50 metres from Bute Mills. Head towards the town centre, passing Starbucks to your right, and you will see the Mill across to your left.

BY AIR

Take the Stagecoach bus Route 99 from Bay 7 outside the Terminal building to Luton railway station (it runs first to Luton Parkway station then on to the main Luton station). From the station, head towards the town centre, passing Starbucks to your right, and you will see the Mill across to your left.

The main entrance is at the front of the building.

ADDRESS:

**Bute Mills,
74 Bute Street
Luton
LU1 2EY**

BY ROAD TO BUTE STREET SHOPPERS CAR PARK

From the M1, exit at Junction 10 and continue along dual carriageway to the traffic lights.

Turn left at the lights down a short slip road to a roundabout. Take the first exit left, passing a retail park on your right. Continue over two smaller roundabouts until you reach a larger roundabout with traffic lights. Cross over this roundabout taking the second exit and passing St Mary's church on your left. Continue over a further set of traffic lights passing a multi-storey car park on your left and an Avis car rental branch.

You will reach a junction with two smaller roundabouts. Cross over the first, taking the second exit. Cross over the second, taking the second exit (the first exit is one-way). Immediately on your left, before the bridge, you will see a turning into the Bute Mills shoppers car park. Turn in here and you will see Bute Mills on your left. Parking is pay and display.

CATERING AT BUTE MILLS

Relax and enjoy your event here at Bute Mills with delicious food and refreshing beverages.

For those hosting early morning meetings, we can offer a selection of pastries, fresh fruits along with complimentary tea and coffee available throughout your event.

Having a full day meeting? We can also provide you with a light lunch buffet which includes a selection of sandwiches, crisps, fresh fruits and fruit juices with complimentary tea and coffee available throughout the day, all served in our break out area.

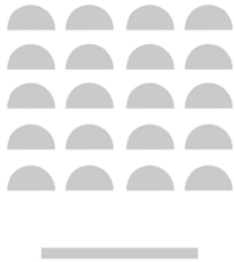
Please contact us for more information and for a bespoke quote.



ROOM SEATING STYLES

We can vary the seating in the Conference, Art and Drama room to suit your event.

Here are some of the most popular seating and set up styles.



Theatre Style



Boardroom Style



Cabaret Style

For more information please visit our website:

www.butemills.co.uk

Alternatively, please call Nicki on 01582 748961 or e-mail her at nicki.summerson@youthscape.co.uk for room hire questions and bookings.



Bute Mills, 74 Bute Street , Luton LU1 2EY | Tel: 01582 877220 | REGISTERED CHARITY NO 1081754